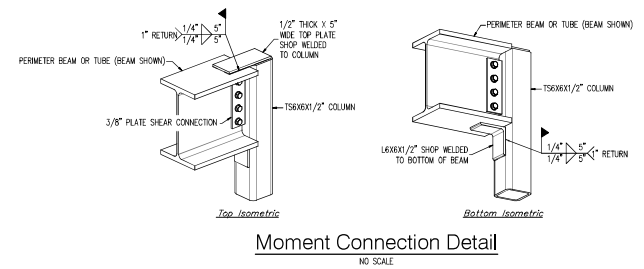


Steel Framing Plan
SCALE = 1/8" = 1'-0"

- NOTES:**
1. REFERENCE TOP OF CONCRETE SLAB (ON GRADE) = 100'-0".
 2. TYPICAL BEAM TOP OF STEEL ELEVATION = 111'-3" FROM GRADE
 3. ▶ INDICATES FIELD WELDED MOMENT CONNECTION - SEE DETAIL THIS SHEET.



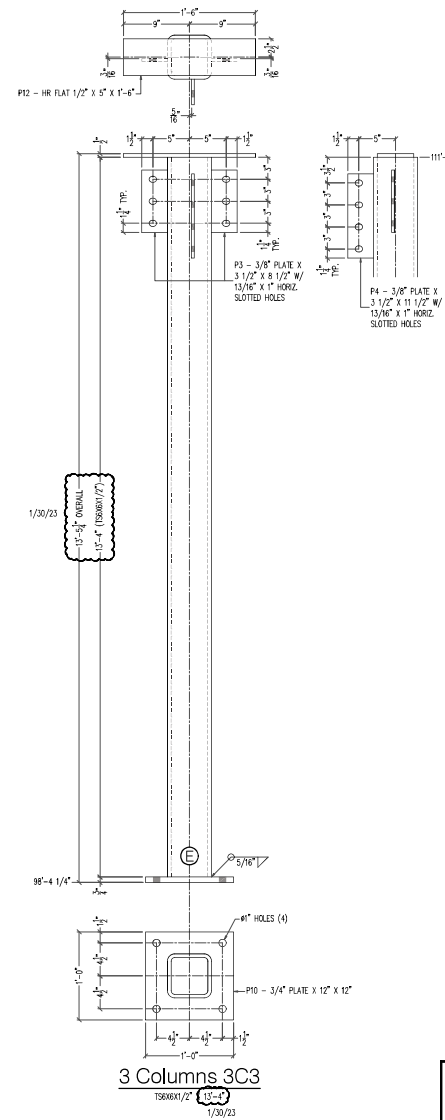
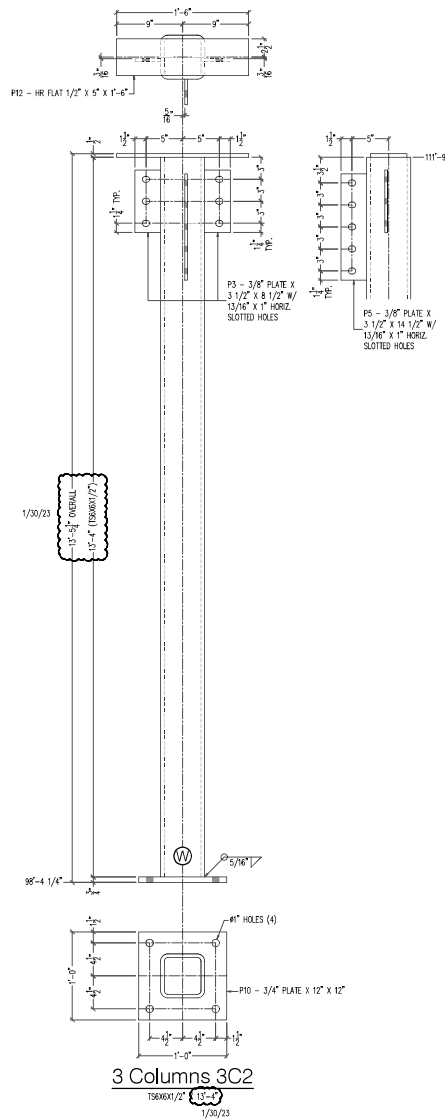
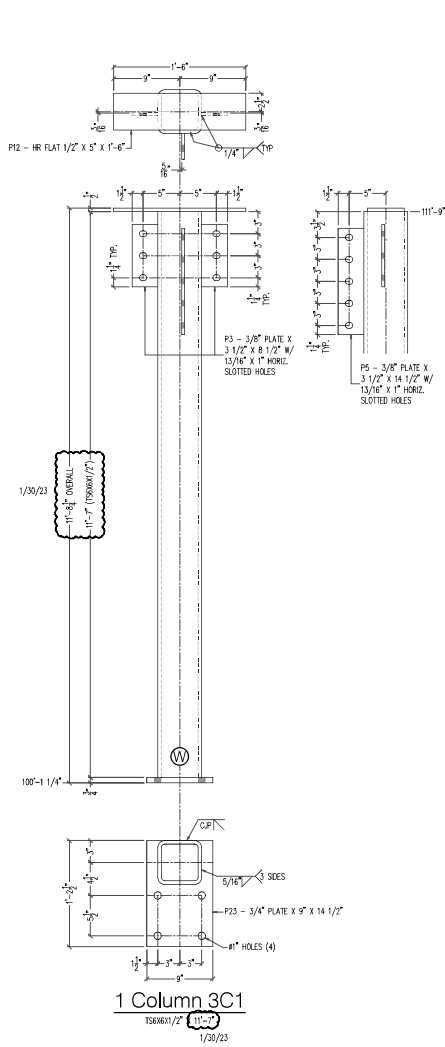
FOR APPROVAL ONLY
Not For Field Use
(jscc) 1/30/23

Jacklin STEEL SUPPLY CO.
"AS OUR BPS, WE CARE...!"

OFFICE: (231) 946-8434
TOLL FREE: (800) 223-8434

2410 AERO PARK DRIVE
TRAVERSE CITY, MICHIGAN

Project Name: ELK LAKE INN				Sheet Title: STEEL FRAMING PLAN			
PKG#	Revision #1	Revision #2	Revision #3	Revision #4	Drawn By	Date	Sheet Number
1	1/24/23	1/30/23			J. W. G. R. T. Z.	1/22/23	
Project Number: T23004							E2



BILL OF MATERIAL				
MARK	QTY	DESCRIPTION	LENGTH	NOTES
3C1	1	T56XK1/2"	115'-7"	
P3	2	3/8" PLATE X 3 1/2"	8 1/2"	M/R
P5	1	3/8" PLATE X 3 1/2"	14 1/2"	M/R
P12	1	HR FLAT 1/2" X 5'	1'-6"	
P23	1	3/4" PLATE X 9"	14 1/2"	PGM
3C2	3	T56XK1/2"	13'-4"	
P3	6	3/8" PLATE X 3 1/2"	8 1/2"	M/R
P5	3	3/8" PLATE X 3 1/2"	14 1/2"	M/R
P10	3	3/4" PLATE X 12"	12"	PGM
P12	3	HR FLAT 1/2" X 5'	1'-6"	
3C3	3	T56XK1/2"	13'-4"	
P3	6	3/8" PLATE X 3 1/2"	8 1/2"	M/R
P4	3	3/8" PLATE X 3 1/2"	11 1/2"	M/R
P10	3	3/4" PLATE X 12"	12"	PGM
P12	3	HR FLAT 1/2" X 5'	1'-6"	

FOR APPROVAL ONLY
Not For Field Use
(Jssc) 1/30/23

Jacklin STEEL SUPPLY CO.
OFFICE: (231) 946-8434 "95 OWNERS WE CARE!!"
TOLL FREE: (800) 223-8434 2410 AERO PARK DRIVE
TRAVERSE CITY, MICHIGAN

Shop Notes:		ELK LAKE INN				DETAILS	
• Galvalume	WF A992	Angle	A36	Flange	A36	Drawn By:	Jen
• Holes	13'10" UNCL.	Channel	A36	Web	A36	Checked By:	Jen
• Revisions	12/20/23	1/4" x 1/4" PADS	PLATE	PLATE	PLATE	Project Number:	T23004
• Part	1.0047 RECOURSE FINISH	1 1/2" x 1/4"	1.00/23	Revised #1	Revised #2	Revised #3	Revised #4

3